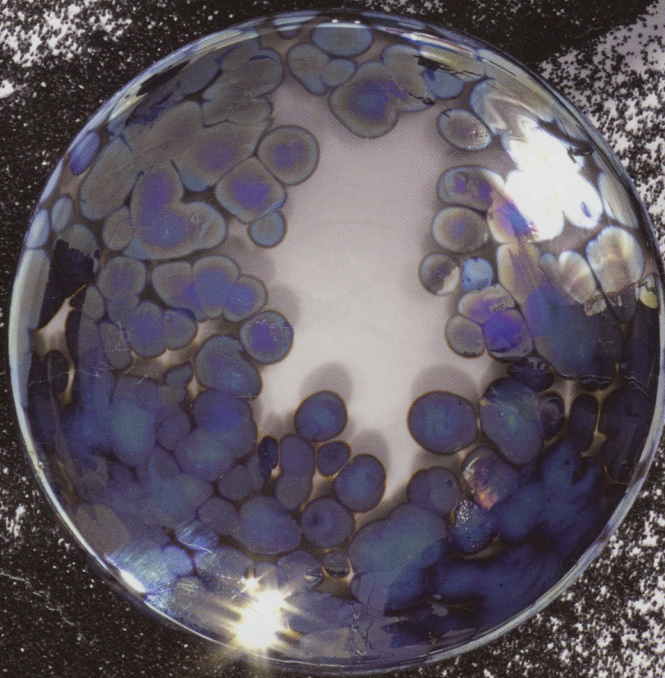
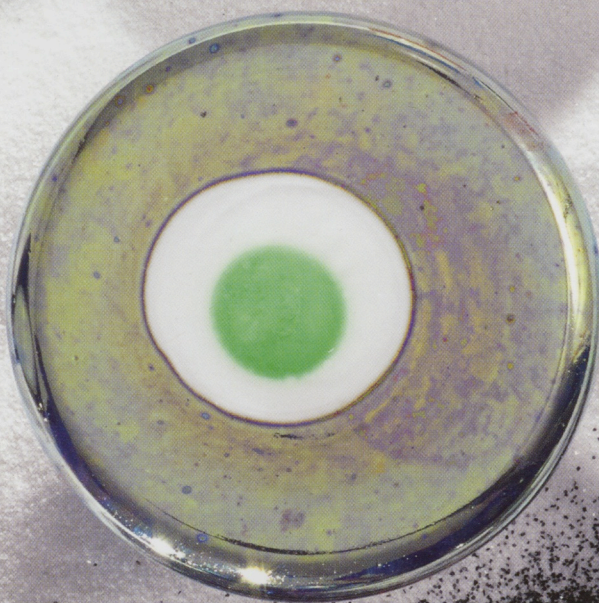


INTERIOR DESIGN[®]

OCTOBER 31
2015

fall
market
tabloid





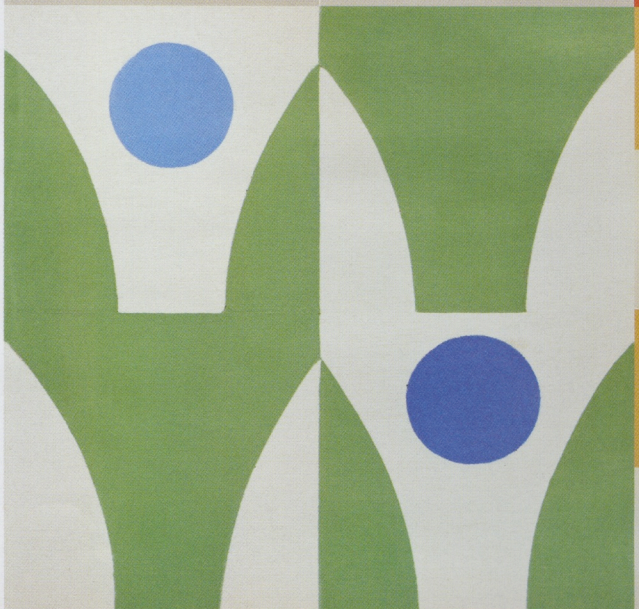
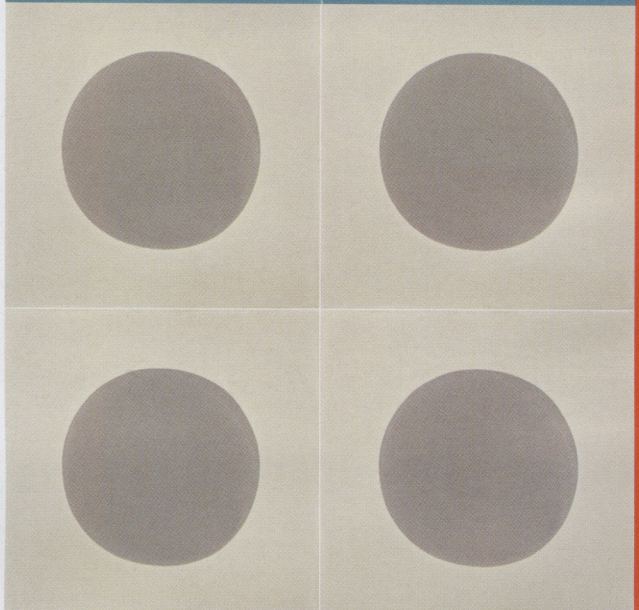
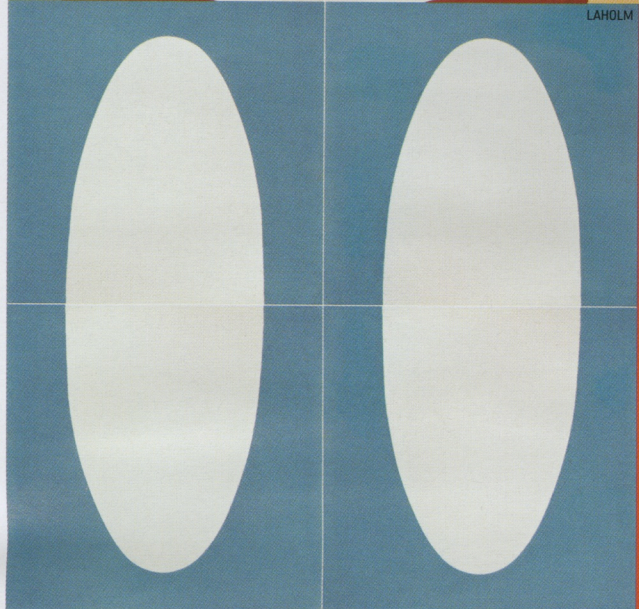
KOTKA
LAHOLM



NARVIK



STOCKHOLM
SOLNA



granada tile

Erin Adams's first collection for the L.A.-based manufacturer brings warmth and whimsy to walls and floors via 21 graphic patterns named after Nordic cities, among them **Stockholm**, **Kotka**, **Solna**, **Laholm**, and **Narvik**. The 8-inch cement tiles feature geometric motifs that repeat in a play of positive and negative space, creating striking juxtapositions of color—and forming vibrant patterns when installed. Suitable for in- and outdoor use, they come in four standard colorways—think sophisticated palettes of sage, turquoise, coral, and midnight blue—and can be customized in combinations of 30 hues. granadatile.com. **circle 786** ➤

"I like to deconstruct things and take them down to where form and function become one. That's how I approach my design: it's all about pattern and simplified form."
—Erin Adams

KITCHENbath

