

LOS ANGELES

luxe.

interiors + design®



\$ 9.95 A SANDOW PUBLICATION | LUXE SOURCE®



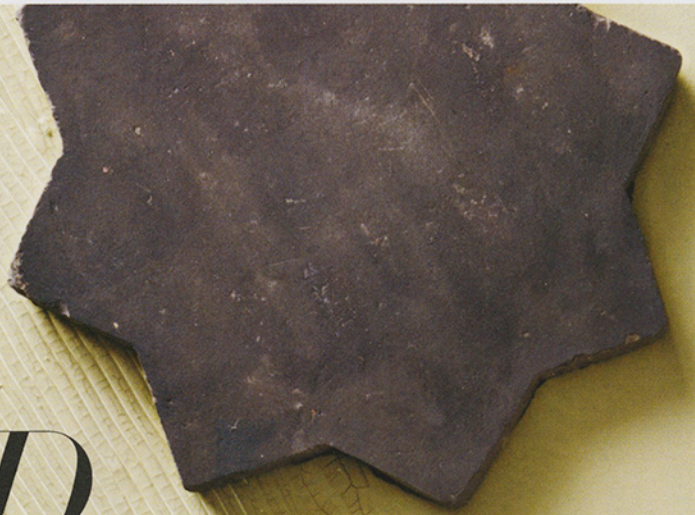
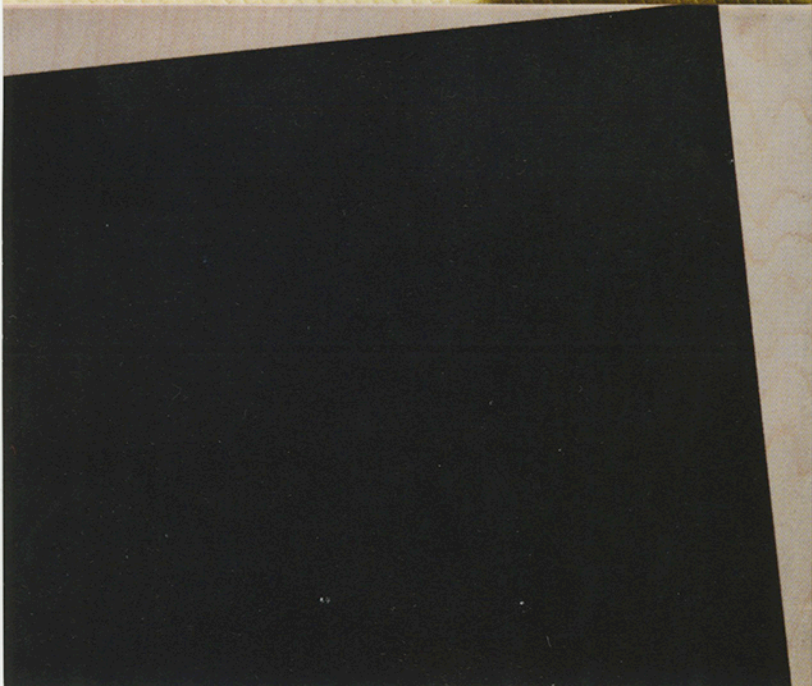
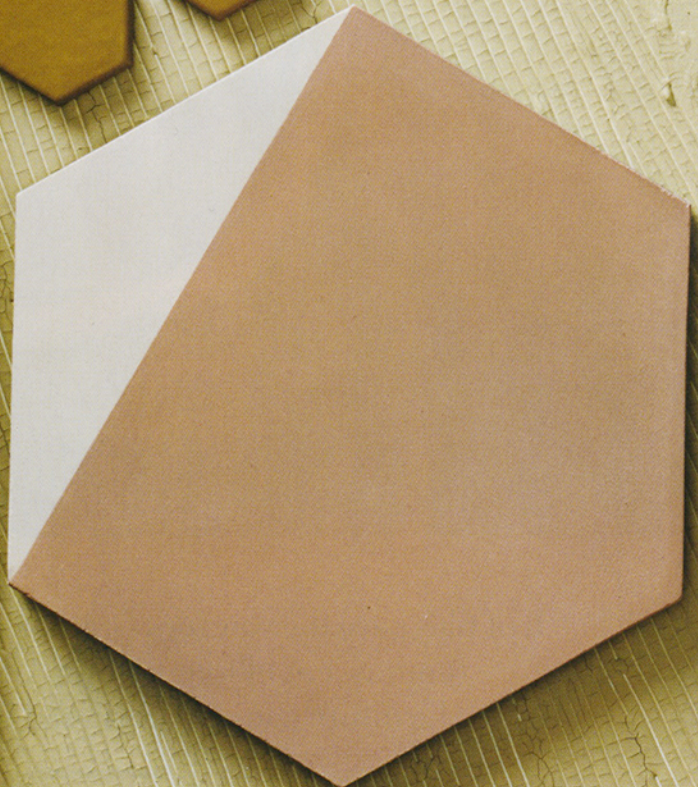
0 74808 03333 1

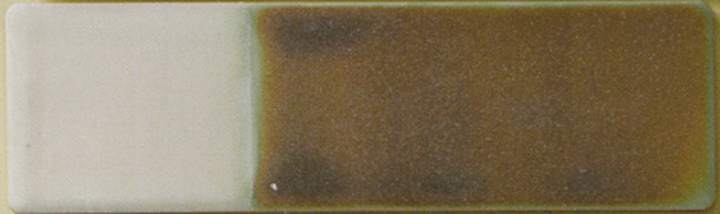
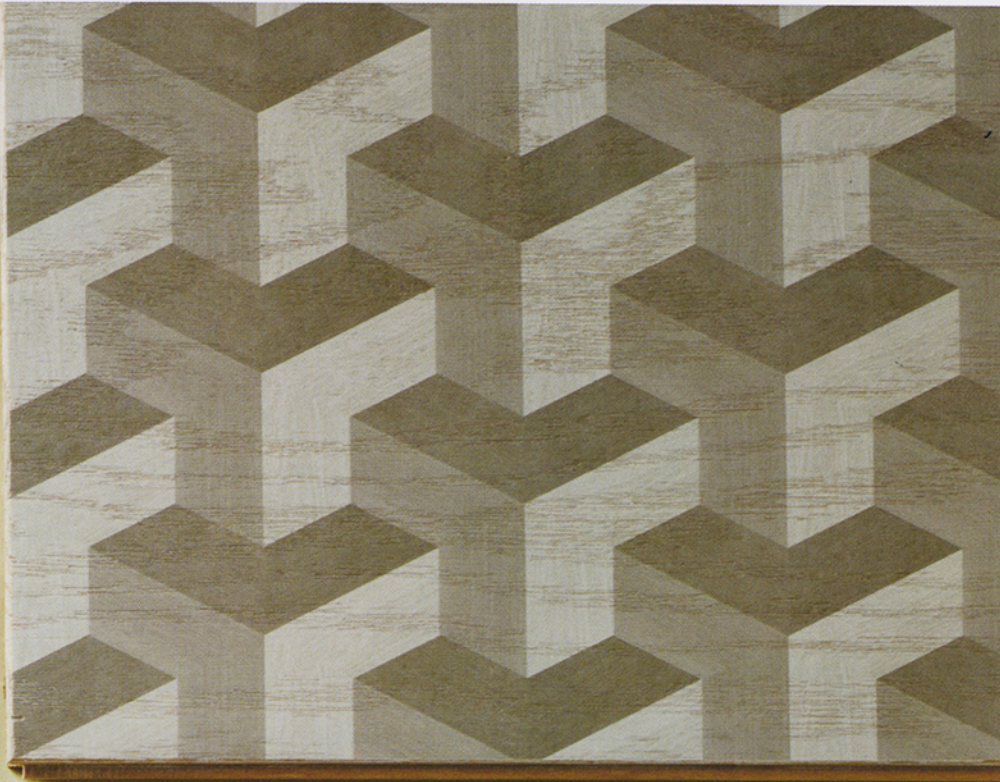
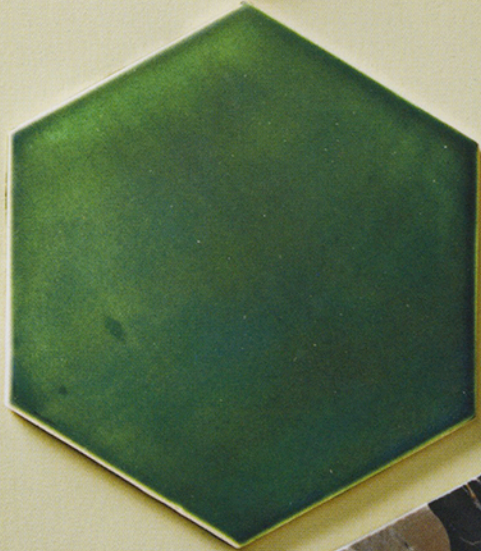
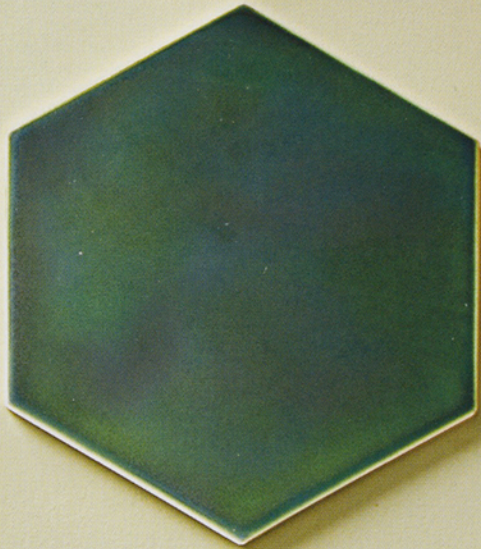
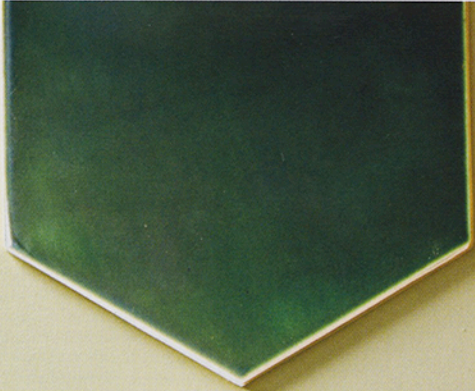
MAY/JUNE 2017 | DISPLAY UNTIL 07/03/17

WELL GROUTED

THIS SEASON'S DECORATIVE TILES DAZZLE AND INSPIRE
IN A STYLISH RANGE OF STONE-COLD-COOL DESIGNS.

PRODUCED BY KATE BERGERON WITH ELIZABETH HUEBSCH
PHOTOGRAPHY BY SHAY PLATZ





METHOD OF MODNESS

Clockwise from top left: French Reproduction Star Tile in Terracotta Belgian Black / Terracotta Collection / cletile.com. Large Hexagons in Glossy 47 Vermont Pine / mercurymosaics.com. Tessellation Hardwood Floor Tile in Grey / Heritage Parquet Collection / mirthstudio.com. Rothko Tiles in Mystic White and Bungalow / Rothko Collection / erinadamsdesigns.com. Portoro Gold Tile / waterworks.com. Ipswich 1812-E in Taupe and White / Echo Collection / granadatile.com. Tilt in Black on Ice / moonishco.com. Coquet Black / Hand-Painted Collection / mosaichse.com. 2" Hexagon Tiles in Mustard Seed / Recycled Tile Collection / fireclaytile.com.

“For the shower of this 1928 Spanish-style California home, my client wanted to feel like he was surrounded by a lush garden, so I brought in nature by incorporating plants; the colorful tile is a nod to the architecture.”

—ADRIANNA LOPEZ
adriannalopezdesign.com



“A WALL OF WINDOWS LOOKS OUT ON A STRIP OF GARDEN, BRINGING IN NATURAL LIGHT, WHILE DARK BLUE TILES AND WARM TIMBERS PROVIDE AN INVITING BATHING EXPERIENCE.”

—REBEKAH VALLANCE
cultivar.net.au



“THIS MOSAIC PATTERN WAS CHOSEN TO MELT IN WITH THE COLORS OF THE LANDSCAPE—SUMMERTIME GREENS AND THE RED/BROWN SHADES OF FALL.”

—RICHARD LINDVALL
richardlindvall.com

Clockwise from top right: A lively blue-and-white geometric pattern, Fez from Granada Tile’s Echo collection, brings Mediterranean flair to a Southern California shower by Adrianna Lopez. This outdoor shower designed by Richard Lindvall blends in with its environment, thanks to its nature-inspired mosaic tile by Bisazza and copper fixtures. Royal blue ceramic tiles and a recycled-pine benchtop lend color and texture to this Rebekah Vallance-designed bath.